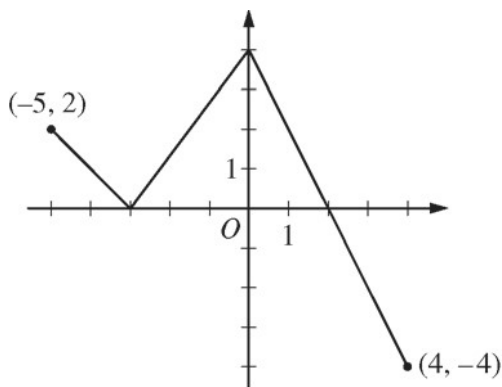


2014 AP[®] CALCULUS AB FREE-RESPONSE QUESTIONS

CALCULUS AB
SECTION II, Part B
Time—60 minutes
Number of problems—4

No calculator is allowed for these problems.



Graph of f

3. The function f is defined on the closed interval $[-5, 4]$. The graph of f consists of three line segments and is shown in the figure above. Let g be the function defined by $g(x) = \int_{-3}^x f(t) dt$.
- (a) Find $g(3)$.
- (b) On what open intervals contained in $-5 < x < 4$ is the graph of g both increasing and concave down? Give a reason for your answer.
- (c) The function h is defined by $h(x) = \frac{g(x)}{5x}$. Find $h'(3)$.
- (d) The function p is defined by $p(x) = f(x^2 - x)$. Find the slope of the line tangent to the graph of p at the point where $x = -1$.
-